



 **National Trust Garden Sheds**  
By Crane Sheds and Summerhouses

---



## This collection is inspired by beautiful buildings within National Trust estates.

Inspired by ages gone by yet using modern techniques, our new range of garden sheds are very affordable and beautiful. They are real gardeners sheds; with traditional design features such as vertical sawn boards, a corrugated roof and a very attractive colour palette to choose from to suit any garden.

We took our inspiration for our range of sheds from the outbuildings of several National Trust properties scattered around East Anglia. We visited, photographed and got literally a real “feel” for the outbuildings of bygone times in these beautiful grounds.

We researched materials and construction and in collaboration with the National Trust drew our designs for a proper gardeners delight. These sheds will nestle in any garden, are low maintenance and finished in a range of traditional colours to suit your surroundings.

Constructed from timber sourced from an FSC accredited forest and mill (and being a climate friendly resource), the environmental sustainability of our product is very strong. In fact the garden sheds themselves are FSC accredited and compliments our company's environmental policy. Manufactured in Norfolk by skilled craftsmen.



# The Blickling



## Features

**Handmade** to order in our Norfolk workshop

**Choice** of colours from our National Trust range

**Delivered** and installed in your garden  
**Under** 2.5m high to meet modern planning requirements

**Traditionally** styled windows with toughened glass

**Cast Iron** black door furniture with a mortice lock

**Olden** style black corrugated roofing

**Crafted** from FSC-certified Scandinavian redwood

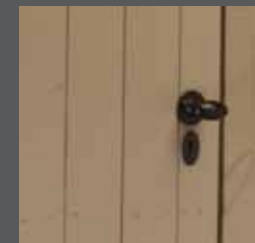
**Traditionally** cladded using vertical sawn boards, lined with a breathable paper membrane

**900mm** wide Logstore

**Available** in 4 different sizes

## Building Sizes

1.8 x 3.0m (6 x 10ft) to 2.4 x 3.6m (8 x 12ft)



**The Blickling**  
Apex Logstore  
**1.8 x 3.0m**  
(6 x 10ft)  
£2,130

**The Blickling**  
Apex Logstore  
**1.8 x 3.6m**  
(6 x 12ft)  
£2,290

**The Blickling**  
Apex Logstore  
**2.4 x 3.0m**  
(8 x 10ft)  
£2,620

**The Blickling**  
Apex Logstore  
**2.4 x 3.6m**  
(8 x 12ft)  
£2,795

# The Oxburgh

## Features

**Handmade** to order in our Norfolk workshop

**Choice** of colours from our National Trust range

**Delivered** and installed in your garden

**Under** 2.5m high to meet modern planning requirements

**Traditionally** styled windows with toughened glass

**Cast Iron** black door furniture with a mortice lock

**Olden** style black corrugated roofing

**Crafted** from FSC-certified Scandinavian redwood

**Traditionally** clad using vertical sawn boards, lined with a breathable paper membrane

**Available** in 3 different sizes

**Pent** roof design

## Building Sizes

1.8 x 2.4m (6 x 8ft) to 2.4 x 3.0m (8 x 10ft)



**The Oxburgh**  
Pent  
1.8 x 2.4m  
(6 x 8ft)  
£1,670

**The Oxburgh**  
Pent  
1.8 x 3.0m  
(6 x 10ft)  
£1,870

**The Oxburgh**  
Pent  
2.4 x 3.0m  
(8 x 10ft)  
£2,250

# The Peckover



## Features

**Handmade** to order in our Norfolk workshop

**Choice** of colours from our National Trust range

**Delivered** and installed in your garden

**Under 2.5m** high to meet modern planning requirements

**Traditionally** styled windows with toughened glass

**Cast iron** black door furniture with a mortice lock

**Olden** style black corrugated roofing

**Crafted** from FSC-certified Scandinavian redwood

**Traditionally** cladded using vertical sawn boards, lined with a breathable paper membrane

**Available** in 3 different sizes

**Apex** roof design with a door in the gable end.

## Building Sizes

1.8 x 2.4m (6 x 8ft) to 6.0 x 6.0m (20 x 20ft)



### The Peckover

Apex door in gable

**1.8 x 2.4m**

(6 x 8ft)

£1,720

### The Peckover

Apex door in gable

**1.8 x 3.0m**

(6 x 10ft)

£1,910

### The Peckover

Apex door in gable

**2.4 x 3.0m**

(8 x 10ft)

£2,310

# The Felbrigg

## Features

**Handmade** to order in our Norfolk workshop

**Choice** of colours from our National Trust range

**Delivered** and installed in your garden

**Under** 2.5m high to meet modern planning requirements

**Traditionally** styled windows with toughened glass

**Cast** iron black door furniture with a mortice lock

**Olden** style black corrugated roofing

**Crafted** from FSC-certified Scandinavian redwood

**Traditionally** clad using vertical sawn boards, lined with a breathable paper membrane

**Available** in 3 different sizes

**Apex** roof design with a door in the side



## Building Sizes

1.8 x 2.4m (6 x 8ft) to 2.4 x 3.0m (8 x 10ft)



**The Felbrigg**  
Apex door in side  
**1.8 x 2.4m**  
(6 x 8ft)  
£1,720

**The Felbrigg**  
Apex door in side  
**1.8 x 3.0m**  
(6 x 10ft)  
£1,910

**The Felbrigg**  
Apex door in side  
**2.4 x 3.0m**  
(8 x 10ft)  
£2,310

## Colour Palette

Inspired by nature and taken from the National Trust paint range.

This colour chart is designed to provide an indication of the colours in our palette. It cannot be taken as an exact replication of colour. However, we are happy to send out colour samples.



Wades Lantern



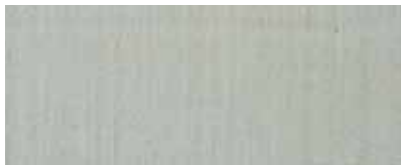
Terrace Green



Dome Ochre



Earls Grey



Disraeli Green



Painters Grey

## Specifications

### Side Walls

12 x 150mm sawn cladding topped by 16 x 38mm sawn cladding on 38 x 50mm planed framing, lined on the inside with a breathable paper.

### Door

710 x 1800mm ledged and braced door, hung with the use of black strap hinges and secured with a mortice lock and black handle.

### Windows

Georgian windows fitted with 4 mm toughened glass set into a joinery made frame.

### Floor

16 x 125mm tongue and groove floorboards on 38 x 50mm tanalised planed floor joists set at no more than 450mm centres.

### Roof

Corrugated roof sheeting fitted to a 38x50mm roof frame.

### Height

All buildings are under 2.5m to the ridge, and have an internal eave height of 1.9m on The Blickling, Peckover and Felbrigg. And 1.8m on The Oxburgh.

### Paint

Your building is painted with a coat of microporous paint, please choose your colour from our National Trust palette.

## Crane Sheds & Summerhouses

**Crane Sheds and Summerhouses** is a family run business, making timber buildings in Norfolk for over 35 years. We are proud to acknowledge that much of our trade is built around our reputation. We firmly believe that this is because we provide a personal service from design stage to installation, where the customer always comes first and is delighted with their building.

Our buildings are exceptional and unrivalled. We source the best quality timber and materials for every stage of our building process right down to the paint systems we use.

We employ skilled craftsmen and a well regarded installation team to finish your building to the very highest of our expected standards.

Telephone 01553 617124

[www.craneshedsandsummerhouses.co.uk](http://www.craneshedsandsummerhouses.co.uk)