



THE GARDEN SHED & WORKSHOP COLLECTION 2012





Crane Sheds and Summerhouses is a family run business, making timber buildings in Norfolk for over 40 years. We are proud to acknowledge that much of our trade is built around our reputation. We firmly believe that this is because we provide a personal service from design stage to installation, where the customer always comes first and is delighted with their building.

Our buildings are exceptional and unrivalled. We source the best quality timber and materials for every stage of our building process right down to the paint systems we use.

We employ skilled craftsmen and a well regarded installation team to finish your building to the very highest of our expected standards.

Our bespoke service means that you can have the building you desire to suit your requirements.

SHED ENGINEERING

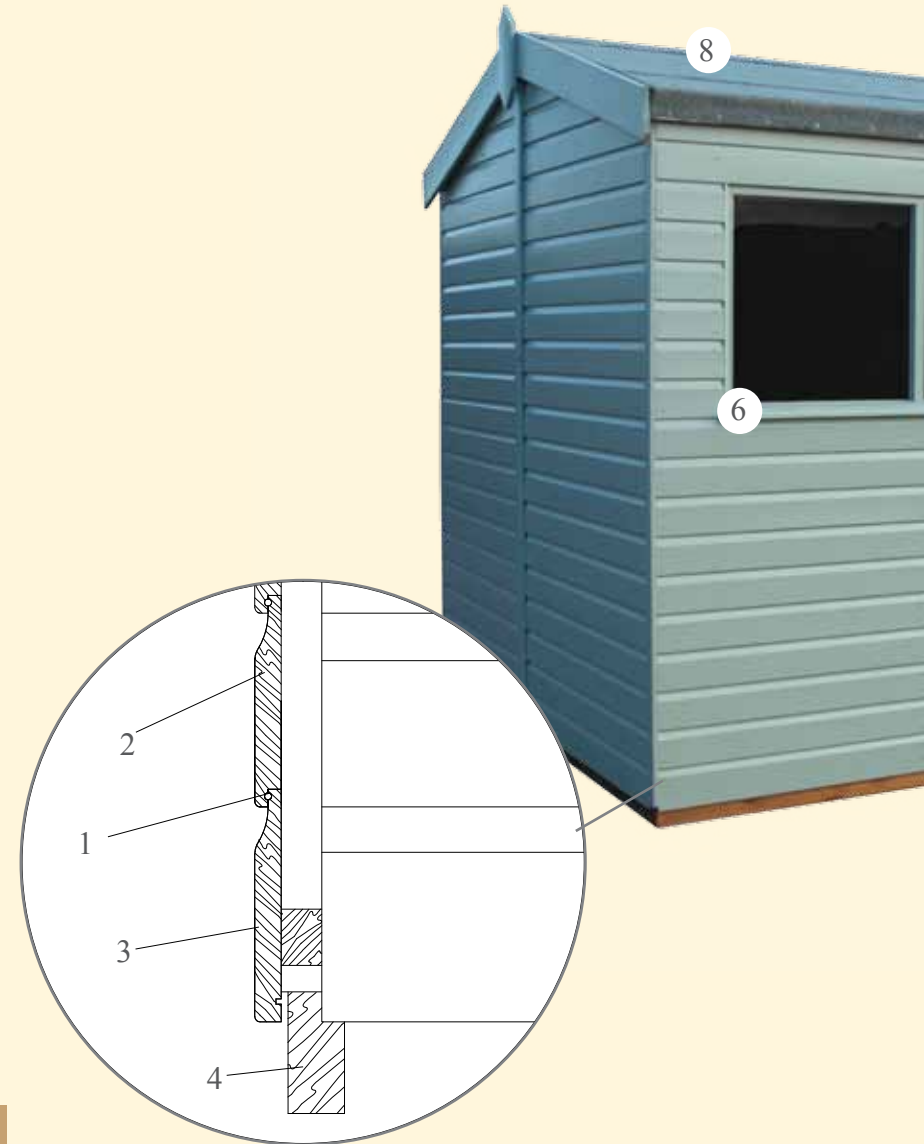
Some of the reasons why we are better..

1. Capillary groove in shiplap, stops water tracking back around the shiplap on painted buildings.

2. Rounded edges, paints and stains cannot grab to sharp edges.

3. Unique bottom board, designed to give a 32mm overhang to cover the endgrains of the floor boards and has a water drip machined in the back face to stop water tracking up.

4. Tanalised floor bearers, as the floor bearer can stand in puddled water we protect these by tanalising which will increase life.





5. Door drip, designed to interlock into shiplap to ensure no leakage path.

6. Window sill, developed with a rounded face to improve paint adhesion.

7. Interlocking window, our joinery made windows are designed so the sill interlocks in to the cladding to remove the risk of leaking.

8. Nylon back roofing felt, as standard our non-rip heavy duty felt is heated on to give increased life.

INTRODUCING THE GARDEN SHED & WORKSHOP COLLECTION

Our Sheds and Workshops are renowned for strength and longevity and a finish of the highest standard. With our extensive range and versatility in design, size and finish we can provide you with a building that can compliment your garden and meet your exact requirements.

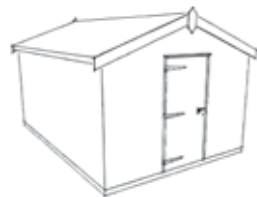
This brochure is designed for you to look through every part of what constitutes your Shed or Workshop and decide on what you would like for your building and what suits the space you have. Simply choose from the following to complete your building.



The Garden Shed & Workshop Collection | Crane Sheds and Summerhouses

BUILDING DESIGN & SIZE

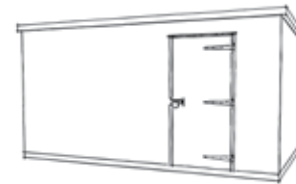
We offer a comprehensive range of standard sized buildings, available in either a pent or apex roofed design. You can then choose the eave height that you require and where you would like the door(s) and windows to suit you. One of the great services we provide is that as we make each building to order, we can also produce none standard sizes and designs whenever and wherever required.



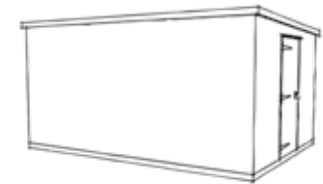
Apex - Door in Gable



Apex - Door in Side



Pent - Door in Side



Pent - Door in Gable



DOORS & WINDOWS

How many doors?... Which style?

Our standard bespoke service means you can choose whether you want a single or double door, an extra door or windows within your door for your building needs. Our framed, ledged and braced, mortised and tenoned doors are all made in-house by our joiners.



Windows Options

The joiners in our workshop manufacture the windows to our own very high standards. They are glazed with 4mm toughened glass as a standard safety feature. Choose where to put your windows in your building or choose to have none and whether to make any opening windows. We can offer Georgian effect or Velux as alternative styles.



SECURITY PACK

Our Sheds and Workshops are exceptionally strong and we are very proud of our unique Security Pack that will complement the structure and be of benefit if any items of value are to be stored in your building.

Since the introduction of our Security Pack in 1994 theft from our customers shed's has been dramatically reduced. We have worked closely with a lock manufacturer to produce our unique 7 lever security lock. The Security Pack consists of a security bolt, non- return security screws on the hinges and stainless steel bars at all of the windows.



Window Bars - 13mm (½ inch) stainless steel bars are mortised into the window frame during manufacture.



Security Screws - Non-return security screws on hinges make it impossible to unscrew them.



Security Lock - A heavy duty sliding bolt with fully encased 7 lever lock. It is anti-sawing, anti-picking, anti-cropping and anti-prising with its own unique key.



OUR TIMBER



Raw Timber



Inspection



Transport



Debarked



Where We Get Our Timber

We partner a timber mill in North Sweden (FSC® certified like ourselves) to ensure we get a constant supply of high quality certificated timber.

Raw Timber

The timber we use is Pinus Silvestris (Scots Pine) which has often been growing for more than 130 years at latitude above 65 degrees north. Because it is slowly grown the timber is more dense which ensures a high quality close grain less susceptible to dead knots.

Forest Management

The timber mill cuts down the right sized tree. The mill manages their forests in a sustainable way ensuring they replant.

Inspection

After the tree has been cut, VMF (The Timber Measuring Association for the Northern Area of Sweden) carries out a delivery inspection and marks the timber with the supplier's identification number. Experienced employees from VMF classify and sort the timber according to its size and quality. Meaning that all timber cut can be traced back to the forest in which it is grown.

Transport

The logs are then transported by lorry to the mill. They only deal with timber grown within 150 km of the mill.

Debarked

The logs are then de-barked; the bark is pulped and sent to a paper mill.



Sawn Timber



Dried



Handchecked



Planed



Finished Timber

Sawn Timber

The log is then sawn into workable pieces; any off-cuts are used to fuel the kiln. There is therefore no waste.

Dried

The pieces are then kilned (like putting the timber in an oven) to achieve the required moisture content of the timber. Crane Sheds and Summerhouses need the correct moisture content for external, British conditions and also so that the timber can be used with our paint systems. Too dry and the timber will swell and take on moisture; too wet and the timber will rot more quickly and will not marry well with the paint system.

Hand checked

When the timber is dried correctly there is another sorting process. Firstly each piece is machine checked and then hand checked for the correct grading of the timber. Making certain of consistently high quality timber.

Planed

Each piece of timber is then planed through a Molder machine for a smooth finish.

Finished Timber

The timber is then stacked and ready for transportation by road - rail - ferry - road to our workshop. The timber is sent directly to us, it is not sitting on docks or waiting (and deteriorating) for transportation by other companies, again ensuring the very highest quality that we can.



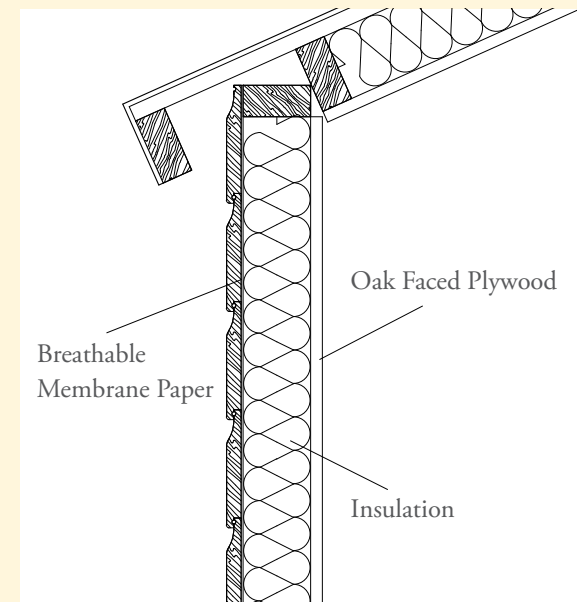
The Garden Shed & Workshop Collection | Crane Sheds and Summerhouses



LINING & INSULATION

To create year-round workspace, increase comfort and decrease noise levels we can offer lining and insulation for your building. For Sheds and Workshops we use a 12mm (½ inch) oak faced plywood lining for a robust, hardwearing finish allowing you to hang shelves and hooks where required.

On all lined buildings we firstly trap a breathable membrane paper between the studwork and the external cladding during manufacture as a moisture trap. We then insulate the cavity and fix the oak faced plywood.



ROOF COVERINGS

Our standard roofing cover is an extreme-wear, heavy duty, 35kg green mineralised felt. We also offer red or grey slate effect roofing tiles and cedar shingles.

Cedar Shingles - We use only the finest quality Canadian Blue Label Cedar Shingles expertly tiled by our own skilled craftsmen to give a traditional finish which will 'silver' with age. They are expected to last 35 years.

Slate Effect - These individually laid, composite slates bring nature and technology together providing the ultimate protection against UV rays, wind, hail and fire. This roofing product carries a 50 year limited warranty. Opt for a more traditional grey or terracotta, which looks great with the lighter paint shades.



Slate Effect - Traditional Grey



Cedar Shingles

The Garden Shed & Workshop Collection | Crane Sheds and Summerhouses



Slate Effect - Terracotta



Green Mineralised Felt

FURTHER OPTIONS

Workbench?

Add your chosen size workbench to your building for your DIY or hobby needs. H900mm x W600mm framed workbench. For a solid finish we use oak-faced plywood.



Need separate space...how about a partition?

Make your building multi-functional by sectioning and separating the space.



Do you need electric?

For lighting and using your equipment in your building, you may wish to consider our electric pack. Consisting of 4 double sockets, 1 external double socket and fluorescent lighting. We install the pack using qualified electricians who take all the wiring to a consumer unit ready for you to connect to your electricity supply. We can also supply your building with a heater.

Flooring Options....

Our standard and robust floorboards are set on closely spaced, tanalised floor joists. If you are storing particularly heavy items or machinery we would recommend our heavy duty floor or should you be spending long periods of time in your building then we would advise on our under floor insulation.

Cladding Options...



Shiplap - (ex 19 x 125mm)
Shiplap is our traditionally used cladding and comes as standard on your building giving a planed smooth surface finish. It is a far thicker shiplap than other manufacturers use.



Weatherboard - (21>8 x 125mm)
Our weatherboard cladding is machined from the same high quality timber as the shiplap but in a sawn finish which gives a more rustic look to your building.

TREATMENT AND PAINT

Your building will be treated in a light oak preservative which protects against fungi and woodworm. For a painted look and a vastly increased redecoration cycle consider our Sikkens or Valtti paint systems.

VALTTI

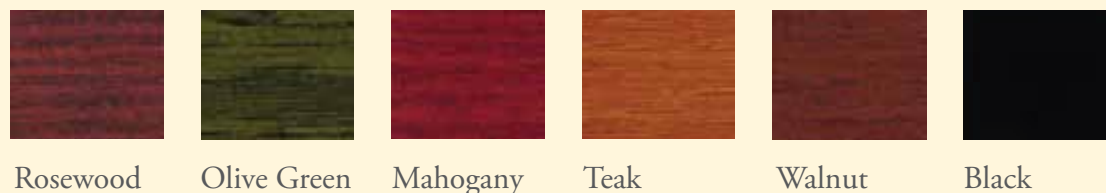
Inspired by nature and the soft neutral tones of traditional colonial buildings our extensive colour range is offered in best quality, weather resistant Valtti paint. This four coat system has been proved to be the best possible protection for exterior timber. Valtti is fully opaque and will enhance any building giving an exceptionally durable, low maintenance solid finish.



If our colours do not compliment your surroundings it is possible to match any colour at an extra charge.

SIKKENS

Sikken provides long lasting protection for your building yet still allowing the grain to be seen enhancing the natural beauty of the timber.



This colour chart is designed to provide an indication of the colours in our palette. It cannot be taken as an exact replication of colour. However, we are happy to send out colour samples.

DELIVERY & INSTALLATION

Our experienced and professional fitters deliver and install all our buildings free of charge.

As our business is very much dependant on our reputation in providing an excellent product and service our customer care is exceedingly important to us and you will find that we very much pride ourselves on this. From design stage through to installation providing the best possible service is our number one priority.



PRICE LIST

SIZE (Gable first)	Height		Roof Over- hang	Oak Ply Lining & Ins	Cedar Shgls /Slate effect tiles	Opt. Paint System	
	1.85m eaves	2.0m eaves				Sikkens	Valtti
1.2 x 1.8m (4 x 6ft)	£1,085	£1,190	£155	£1,050	£1,045	£310	£840
1.5 x 2.1m (5 x 7ft)	£1,200	£1,320	£155	£1,050	£1,045	£325	£910
1.8 x 1.8m (6 x 6ft)	£1,200	£1,320	£155	£1,050	£1,045	£325	£910
1.8 x 2.4m (6 x 8ft)	£1,315	£1,435	£155	£1,050	£1,075	£350	£950
1.8 x 3.0m (6 x 10ft)	£1,560	£1,720	£155	£1,245	£1,290	£380	£1,005
1.8 x 3.6m (6 x 12ft)	£1,875	£2,065	£155	£1,440	£1,550	£395	£1,075
2.4 x 1.8m (8 x 6ft)	£1,380	£1,510	£165	£1,075	£1,075	£350	£950
2.4 x 2.4m (8 x 8ft)	£1,710	£1,870	£165	£1,295	£1,290	£380	£1,005
2.4 x 3.0m (8 x 10ft)	£2,085	£2,300	£165	£1,515	£1,550	£395	£1,075
2.4 x 3.6m (8 x 12ft)	£2,375	£2,630	£165	£1,740	£1,915	£480	£1,340
2.4 x 4.2m (8 x 14ft)	£2,720	£2,990	£165	£1,970	£2,150	£495	£1,385
2.4 x 4.8m (8 x 16ft)	£2,975	£3,275	£165	£2,180	£2,465	£510	£1,460
2.4 x 5.4m (8 x 18ft)	£3,195	£3,515	£165	£2,415	£2,775	£535	£1,505
2.4 x 6.0m (8 x 20ft)	£3,455	£3,805	£165	£2,630	£3,070	£560	£1,555
3.0 x 2.4m (10 x 8ft)	£2,645	£2,900	£205	£1,485	£1,550	£415	£1,075
3.0 x 3.0m (10 x 10ft)	£2,880	£3,170	£205	£1,710	£1,915	£515	£1,385
3.0 x 3.6m (10 x 12ft)	£3,170	£3,485	£205	£1,970	£2,295	£525	£1,430
3.0 x 4.2m (10 x 14ft)	£3,445	£3,800	£205	£2,205	£2,690	£555	£1,505
3.0 x 4.8m (10 x 16ft)	£3,735	£4,110	£205	£2,460	£3,070	£580	£1,555
3.0 x 5.4m (10 x 18ft)	£4,035	£4,440	£205	£2,700	£3,455	£590	£1,600
3.0 x 6.0m (10 x 20ft)	£4,305	£4,755	£205	£2,945	£3,815	£620	£1,680
3.6 x 2.4m (12 x 8ft)	£3,090	£3,390	£255	£1,710	£1,915	£525	£1,430
3.6 x 3.0m (12 x 10ft)	£3,390	£3,725	£255	£1,970	£2,295	£545	£1,490
3.6 x 3.6m (12 x 12ft)	£3,700	£4,065	£255	£2,240	£2,775	£640	£1,760
3.6 x 4.2m (12 x 14ft)	£3,990	£4,390	£255	£2,505	£3,235	£650	£1,820
3.6 x 4.8m (12 x 16ft)	£4,300	£4,750	£255	£2,795	£3,675	£675	£1,880
3.6 x 5.4m (12 x 18ft)	£4,610	£5,075	£255	£3,080	£4,140	£695	£1,935
3.6 x 6.0m (12 x 20ft)	£4,915	£5,410	£255	£3,360	£4,580	£730	£1,985

SIZE (Gable first)	Height		Roof Over- hang	Oak Ply Lining & Ins	Cedar Shgls /Slate effect tiles	Opt. Paint System	
	1.85m eaves	2.0m eaves				Sikkens	Valtti
4.2 x 2.4m (14 x 8ft)	£3,625	£3,985	£295	£1,885	£2,155	£630	£1,720
4.2 x 3.0m (14 x 10ft)	£3,970	£4,360	£295	£2,205	£2,690	£640	£1,760
4.2 x 3.6m (14 x 12ft)	£4,280	£4,705	£295	£2,505	£3,235	£665	£1,840
4.2 x 4.2m (14 x 14ft)	£4,610	£5,075	£295	£2,820	£3,750	£675	£1,880
4.2 x 4.8m (14 x 16ft)	£4,940	£5,430	£295	£3,120	£4,275	£695	£1,935
4.2 x 5.4m (14 x 18ft)	£5,275	£5,790	£295	£3,430	£4,810	£730	£1,985
4.2 x 6.0m (14 x 20ft)	£5,585	£6,145	£295	£3,740	£5,345	£740	£2,030
4.8 x 2.4m (16 x 8ft)	£4,280	£4,705	£335	£2,125	£2,470	£650	£1,820
4.8 x 3.0m (16 x 10ft)	£4,655	£5,100	£335	£2,460	£3,070	£675	£1,880
4.8 x 3.6m (16 x 12ft)	£4,990	£5,495	£335	£2,795	£3,675	£695	£1,935
4.8 x 4.2m (16 x 14ft)	£5,350	£5,870	£335	£3,120	£4,275	£730	£1,985
4.8 x 4.8m (16 x 16ft)	£5,705	£6,270	£335	£3,465	£4,885	£740	£2,030
4.8 x 5.4m (16 x 18ft)	£6,055	£6,665	£335	£3,815	£5,505	£750	£2,070
4.8 x 6.0m (16 x 20ft)	£6,425	£7,055	£355	£4,145	£6,105	£770	£2,155
5.4 x 2.4m (18 x 8ft)	£5,350	£5,870	£410	£2,325	£2,775	£690	£1,915
5.4 x 3.0m (18 x 10ft)	£5,755	£6,335	£410	£2,700	£3,445	£730	£1,985
5.4 x 3.6m (18 x 12ft)	£6,155	£6,775	£410	£3,070	£4,140	£740	£2,030
5.4 x 4.2m (18 x 14ft)	£6,570	£7,230	£410	£3,430	£4,810	£750	£2,070
5.4 x 4.8m (18 x 16ft)	£6,975	£7,685	£410	£3,815	£5,505	£760	£2,130
5.4 x 5.4m (18 x 18ft)	£7,395	£8,140	£410	£4,165	£6,165	£790	£2,200
5.4 x 6.0m (18 x 20ft)	£7,800	£8,595	£410	£4,540	£6,850	£800	£2,240
6.0 x 2.4m (20 x 8ft)	£6,015	£6,610	£460	£2,540	£3,070	£740	£2,030
6.0 x 3.0m (20 x 10ft)	£6,440	£7,070	£460	£2,945	£3,815	£750	£2,070
6.0 x 3.6m (20 x 12ft)	£6,875	£7,555	£460	£3,340	£4,580	£760	£2,130
6.0 x 4.2m (20 x 14ft)	£7,295	£8,030	£460	£3,740	£5,345	£775	£2,175
6.0 x 4.8m (20 x 16ft)	£7,720	£8,490	£460	£4,145	£6,095	£800	£2,240
6.0 x 5.4m (20 x 18ft)	£8,150	£8,955	£460	£4,540	£6,850	£815	£2,300
6.0 x 6.0m (20 x 20ft)	£8,580	£9,430	£460	£4,960	£7,620	£840	£2,365



SPECIFICATION

Every material and component that we use and make is sourced and manufactured to the very highest standards. You will not find better quality anywhere. Crane Sheds and Summerhouses are market leaders in producing exceptional quality timber buildings. Our name is synonymous with strength, design and personal service.

Side Walls	ex 19 x 125mm shiplap cladding on ex 38 x 75mm planed framing.
Door	850 x 1800mm mortise and tenoned, framed ledged and braced door, hung with the use of 3 @ 400mm zinc plated 'T' hinges and secured with a pad bolt.
Door Frame	ex 75 x 75mm planed.
Windows	610mm square set in a window frame fitted with 4 mm toughened glass. A 1.8m length gets 1 window, every 0.6m above this add 1 extra window (included in your price) to a maximum of 6 windows. You do not have to have any windows.
Floor	ex 19 x 125mm tongue and groove floorboards on ex 38 x 75mm tanalised planed floor joists set at no more than 450mm centres.
Roof	ex 19 x 125mm tongue and groove match boarding, on ex 38 x 75mm planed framing covered with green mineralised 35 Kg roofing felt. Trusses are used on all buildings 3.6m long and above.
Height	1.85m to eave height or a more generous 2.0m to eaves which also allows the doors to be put in the side of the building.
Preservative	Your building comes fully treated internally and externally with a light oak preservative, protecting against fungi and woodworm. For an increased redecoration cycle and more colours see our paint systems option.

OPTIONS

Security Pack	£125
Per set of 1700mm double doors in lieu of single	£165
Per opening window in lieu of fixed	£90
Per Georgian effect window	£50
Per extra window	£60
Electrical pack	£915
Electrical pack with heater	£1,140
Weatherboard cladding	10% extra on price of the basic building
Window in shed door	£95
Double glazing per 2ft square window	£70
Underfloor insulation	£37/m ²
Guttering	£40 per m
Heavy duty flooring	£32/m ²

Workbenches

1.8m bench	£130
2.4m bench	£150
3.0m bench	£175
3.6m bench	£185
4.2m bench	£210
4.8m bench	£235
5.4m bench	£275
6.0m bench	£310



The mark of
responsible forestry

